



OASPA Wayfinders 3 Presentation – June 2024

A background image of a water splash on a teal surface, with ripples and droplets visible. The splash is centered and spreads outwards, creating a sense of movement and freshness.

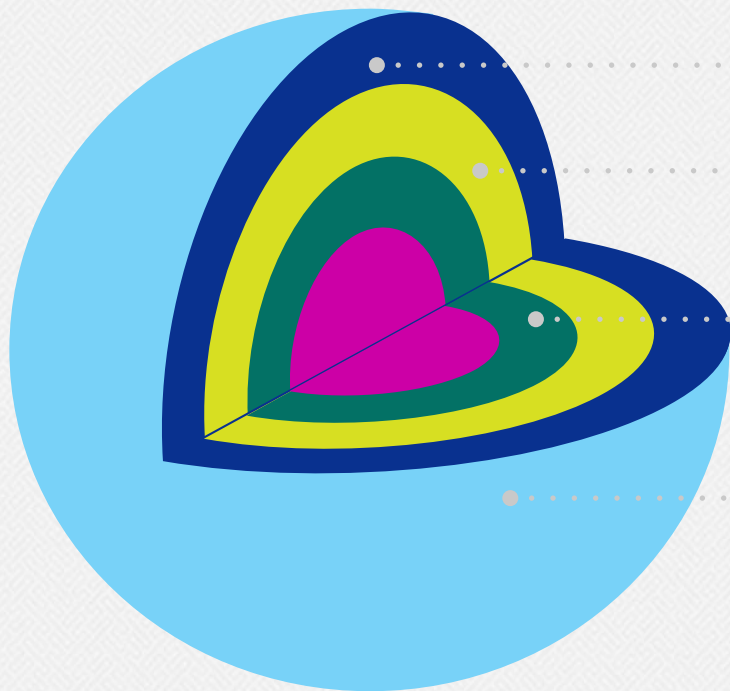
PLOS is a mission-driven, non-profit OA publisher

working to lead transformation
in research communication

Break Boundaries
Empower Researchers
Redefine Quality
Achieve Open Science



PLOS began with APCs, but...



APCs, alone, create a barrier to inclusion in knowledge-sharing.

APC waivers are high-friction, problematic, and often require discovery. Researchers want inclusion not charity.

It's essential that next-gen open science is global, diverse, inclusive and equitable.

Transparent experimentation lifts all boats. **PLOS seeks to be a catalyst for change by exploring alternatives.**

Institutional Partnership Options at PLOS

Non-APC based

Community Action Publishing

Non-APC based

Global Equity

3

Flat Fee

4

Direct Deposit Accounts

Our APC-free alternatives

Community Action Publishing

Solving for

Prohibitive APCs in highly selective STM journals

Launch date and journals

2021; PLOS Medicine, PLOS Biology, PLOS Sustainability and Transformation

Basis for fees

Distribution of transparent total cost recovery target. Fees set according to publish history in journal or discipline area.

Author affiliations counted

Corresponding **and** contributing affiliations

Unique attributes

Public cost recovery targets; capped margin; redistribution of fees to members if revenue targets are exceeded

Collective action for cost recovery

Community Action Publishing (CAP)

Biology

Sustainability and
Transformation

Medicine

COST TRANSPARENCY

Our journals have always been Open and we value transparency in all stages of the publication process; from published peer review to open data. We've approached our collective action business model the same way. We're committed to openness regarding our prices and our progress in reaching our goals.

PLOS Biology

Direct + Indirect Costs	\$1,997,015
10% Operating Margin	\$199,700
Community Cost Recovery Target	\$2,196,715

PLOS Medicine

Direct + Indirect Costs	\$1,422,930
10% Operating Margin	\$142,295
Community Cost Recovery Target	\$1,565,225

PLOS Sustainability and Transformation

Direct + Indirect Costs	\$947,768
10% Operating Margin	\$94,776
Community Cost Recovery Target	\$1,042,544

Collective in nature:

Public cost targets for all journals covered can be found [here](#)

Surplus in excess of 10% margin will be redistributed

No targets exceeded as of 2023 fiscal year.

Our APC-free alternatives

Global Equity

Solving for

Regional differences in ability to pay;
equitable access to OA publishing services

**Launch date and
journals**

2022; PLOS Climate, PLOS Water,
PLOS Global Public Health, PLOS Mental Health

Basis for fees

Publish history in journal scope area + World Bank lending class

**Author affiliations
counted**

Corresponding and contributing affiliations

Key attributes

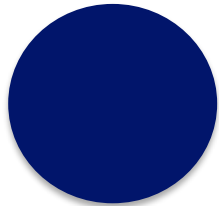
Locally nuanced fee structure; tiered pricing with maximum fee



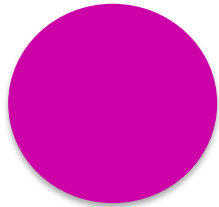
Watch this space! Our CAP review will be available Q4 2024.



We are committed: new journal on Global Equity , new pricing cycle for CAP



Delivering participation across a broad base



Can these business models be used in other contexts?

A large, vibrant image of a flower, possibly a chrysanthemum, in shades of yellow and orange, serving as a background for the right side of the slide.

**Our non-APC models:
what next?**

Business models are evolving and will continue to evolve.



To maximize participation and support for new approaches, we must ensure that the way we assess value also evolves.